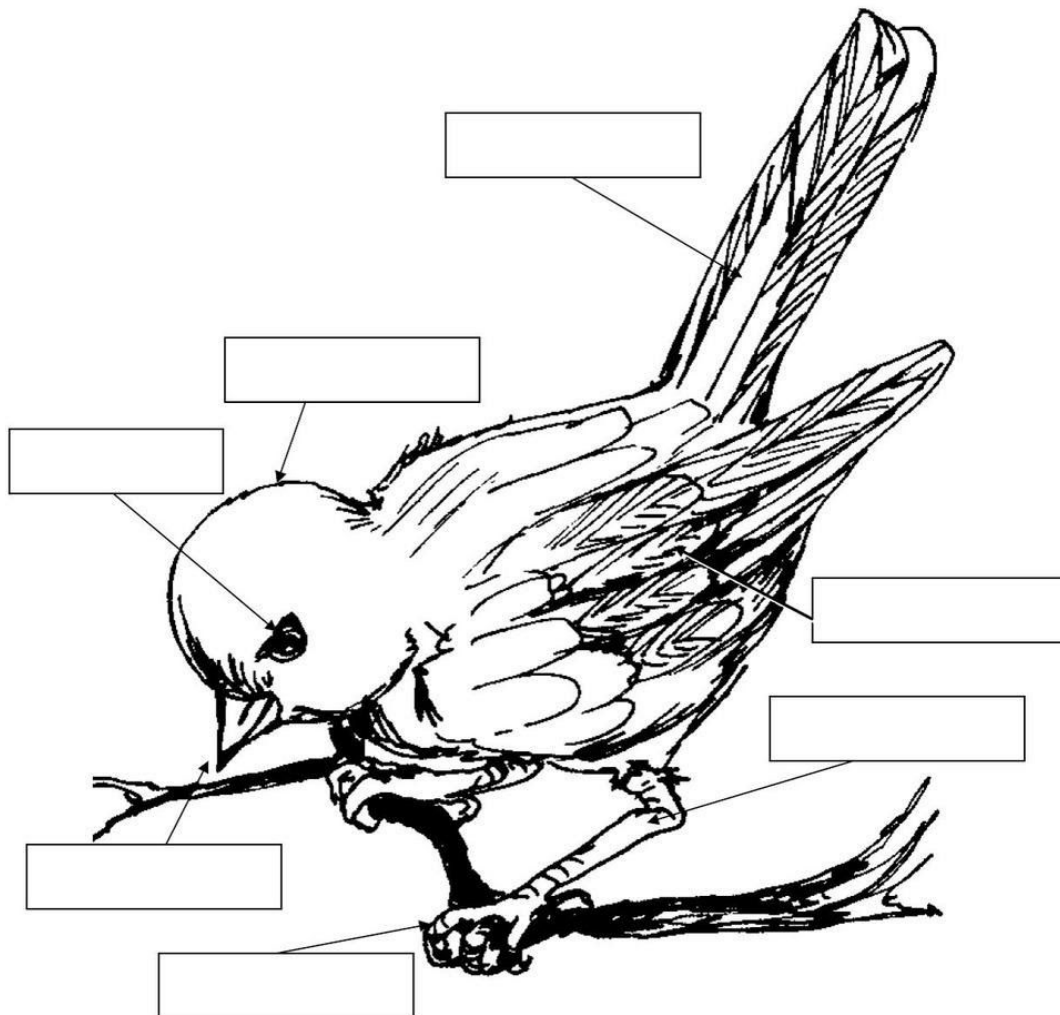


*Tēnā Koutou katoa, kia tau mai i ngā manaakitanga o te wāhi ngaro ki runga i a koutou katoa i tēnei wā urutā. Hoping that you are all taking care of yourselves with your whānau. Here is the learning for this week.*

1. Daily news recorded in a notebook.
2. Multiplication, learn them all. Can you recall them fast? Test with family members?
3. Reading log daily, parent sign.
4. If you have completed your essay and have access to a computer you can make a powerpoint on your native bird. They will be presented when school has re-opened.
7. Week day's Google meet 10:00am. Google classroom complete work on Aurora lights, Galaxy, Procedural Writing, Self defence.
8. Name the parts of the bird



NAME.....STOCK MARKET

DATE 21 - 8 - 20

Show how you solved the problem in the space

1 I bought 10 shares for \$50.00. How much did each share cost?

1A:

2 Debit means I spent some money and bought something? True or False

2A:

3 I am buying 8 shares from Foodtown at \$12.00 a share, how much money do I need?

3A:

4 I have sold some shares for \$100.00, is this a deposit or a withdrawal

4A:

5 I purchased 12 shares for \$108.00, how much did each share cost?

5A:

6 I sold 15 shares, each one cost \$10.00, how much money will I receive?

6A:

7 Credit means I spent some money and bought something?

True or False

7A:

8 I bought 5 shares \$10.00, 7 shares for \$48.00, and another 6 shares for \$22.00. How much money did I spend altogether?

8A:

9 I have sold some shares for \$200.00, how much money did I deposit?

9A:

### Complete the accounts spreadsheet

DATE	DEPOSIT/CREDIT	WITHDRAWAL/DEBIT	BALANCE
14/05	\$ 102.00		\$ 202.00
16/05	\$ 28.00		\$ 230.00
16/05	\$ 65.00		
17/05		\$ 50.00	\$ 245.00
18/05			\$ 445.00
19/05	\$ 155.00		
19/05		\$ 150.00	
20/05	\$ 50.00		\$ 500.00
21/05		\$ 75.00	

10 I have \$25.00 change from \$100.00, how much did I spend?

10A:

11 I sold 12 shares, each one cost \$10.00, how much money will I receive?

11A:

12 I bought 10 shares for \$100.00, 5 shares for \$40.00, and another 2 shares for \$52.00. How much money did I spend altogether?

12A:

13 I am buying 12 shares from KFC at \$12.00 a share, how much money do I need?

13A:

14 I have \$9.00 change from \$73.00, how much did I spend?

14A:

15 The balance is \$550.00. I sold some shares for \$120.00, what is the new balance ?

15A:

16 I sold 9 shares, each one cost \$70.00, how much money will I receive?

16A:

17 I am buying 4 shares from Pizza Hut at \$360.00 , how much did I spend for one share?

17A: